

LESSON PLAN

STD. XII

LESSON PLAN

Class :-XII

SUBJECT :- GEOGRAPHY

**TOPIC:-NATURE AND
SCOPE**



INTRODUCTION

Good morning student's. Today we are going to focus on a new topic but before we begin I would like to ask you a few questions

1. Geography as a field of study is.
2. Human geography studies the relationship between

STATEMENT OF AIM

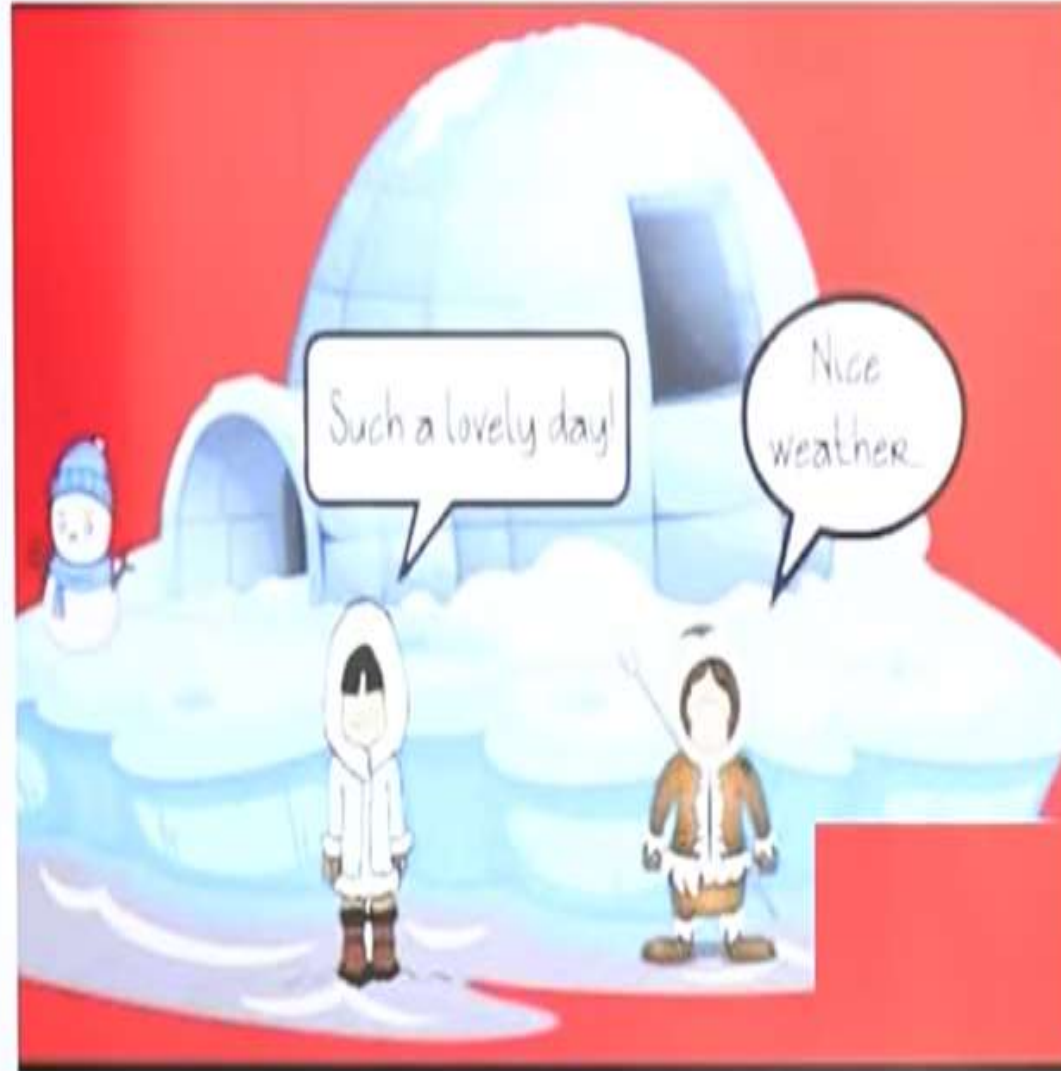
SO TODAY WE ARE GOING TO STUDY THE TOPIC

“NATURE AND SCOPE”

PRESENTAION



Naturalisation of Human and Humanisation of Nature:



Naturalisation of Human and Humanisation of Nature: Fundamer



RECAPTULATION

TEACHER ASKS WHAT DID WE STUDY TODAY

Teacher write down few questions on the blackboard

1. The two main branches of geography are.
2. Nomothetic refers

APPLICATION

1. Idiographic denotes
2. Human being was able to develop technology after they developed better understand of

HOMework

a) Give geographical reasons
Human geography

